

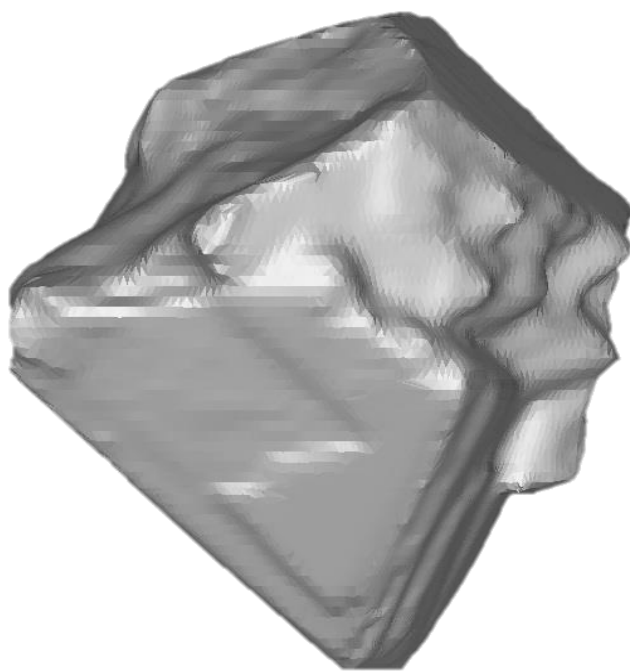
Advisor™ 7.5- Whats New

1. DiaExpert® Edge

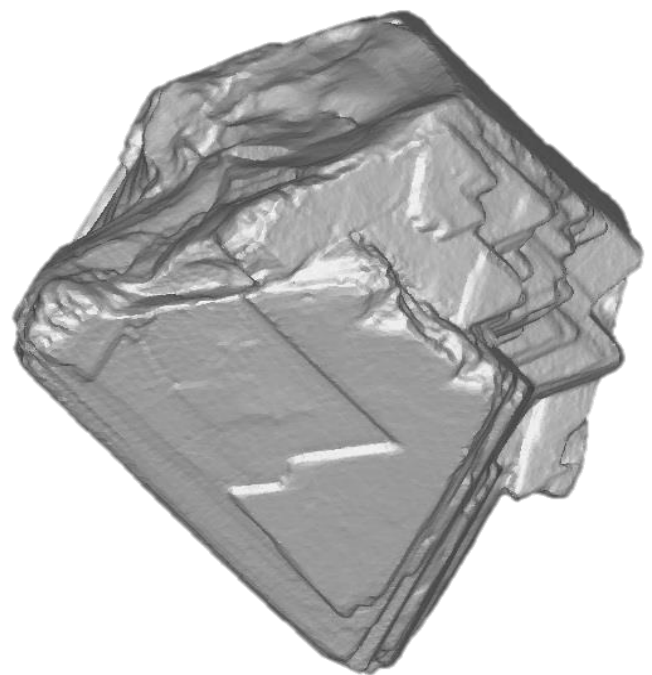
Advisor 7.5 is the first software version who supports the new and revolutionary DiaExpert® Edge system.

The DiaExpert® Edge system is a new generation of the Dia-Expert family.

A revolutionary technology that combines advanced algorithm and unique digital light processing, provides unprecedented levels of accuracy, capturing even the most minute surface features and texture with incredible precision.



Laser mapping



DiaExpert™ Edge Mapping

Advisor™ VII SP5 Release Notes

2. Higher productivity

New algorithm in Advisor 7.5 provide better performances ,accelerating the planning process by 10%-15% compare to the previous Advisor version, thus increasing the number of stones each planner can plan daily.



3. Measurement settings authorization

From now on the Advisor Administrator can control the measurement speed.



A new ability in Advisor 7.5 enables

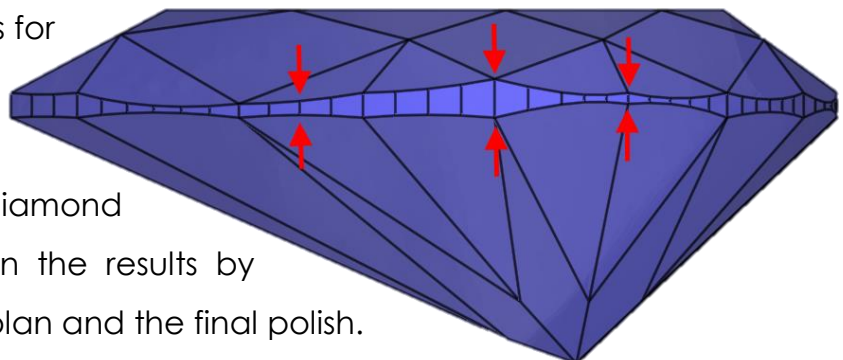
the Advisor administrator to lock the scanning speed, in order to prevent from the DiaExpert® systems operator to scan the stones on unauthorized mapping method.

4. Faster QC on Galaxy® Ultra stones

A new ability in Advisor enable the QC teams to see ultra-inclusions which weren't detected in high confidence as a real inclusions until today, display those inclusions separately and enable the QC to determine if those inclusions are real inclusions or not, thus saving the need to manually chart them and accelerate the QC process.

5. Asymmetric planning

New asymmetric planning abilities for additional shapes, Asher, pears and Marquise, enable you to maximize the yield of your rough diamond and increase your confidence in the results by reducing the gaps between the plan and the final polish.

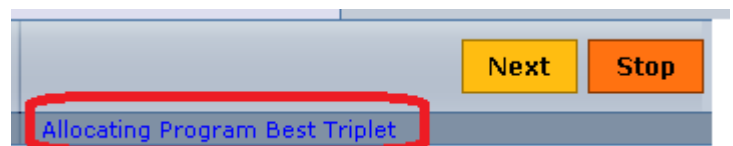


6. Auto planner improvement

Due to the high popularity of the “Auto Planner” feature (CAP) which enable to plan hundreds or even thousands of solutions according to predefined planning programs we have added the options to define the state of the inclusions on the rough surface separately, an ability which will enable the users to define very accurate planning program in order to reach the best solutions automatically without planner intervention.

7. Planning type indication

Advisor VII brought the planning automation to new level with the Auto Planner advanced feature.

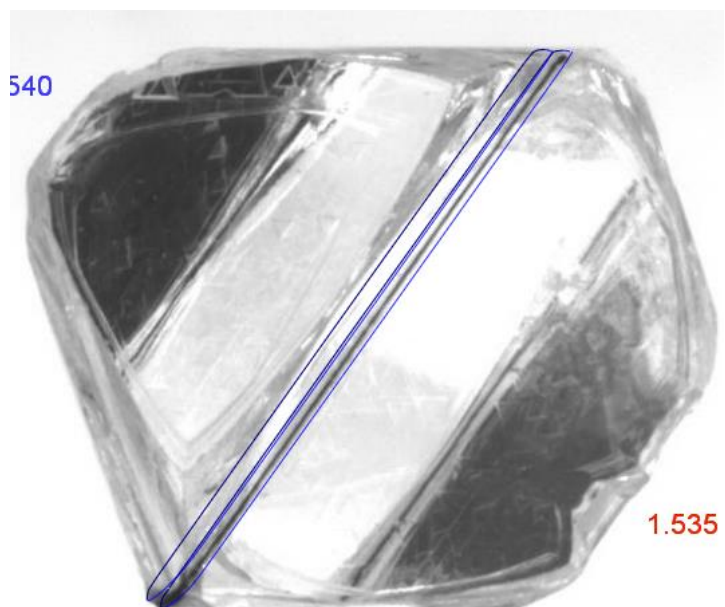


now that the user have so many planning templates to run automatically we have added an indication which will display the planning type that currently running, this will help the user to understand in which stage the program is currently locate or even to skip this specific stage if he thinks this type of allocation is not required.

8. Marking improvement

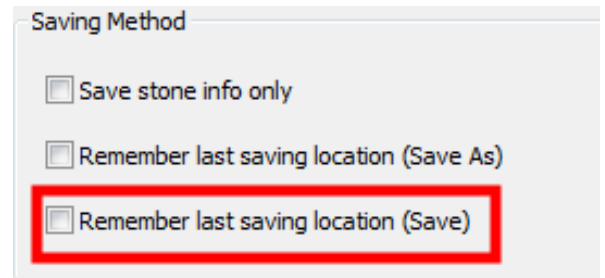
New marking calibration algorithm enable to improve the marking accuracy, to reduce manufactures errors that cause due marking misalignments.

To achieve the initial planning, by maintaining the polished weight and to increase the confidence in your DiaExpert® system.



9. Remember last save location

When planning large number of stones usually the planner working with several folders, to load and save the stones. in Advisor 7.5 we have added an option to save the stone in the last saving location, automatically, even if the stone was opened from other location, this prevents human errors and improve the ease of use as the user don't have to browse and search for the latest save folder for each and every stone.



10. Split inclusions during allocation

As part of the effort to increase the productivity in Advisor 7.5 we have added the option to split inclusions while the planning is running, this option In addition to the other abilities that already exist in Advisor that enable the planner to define the inclusions state and clarity during polished allocation, enable to optimize the planning time and increase productivity as the user can prepare the stone for the next planning cycle even before the current planning has finished.

11. Parallel Window size

In Advisor VII we first introduced the option to create parallel windows, move them while marinating their parallelism and visually see an halo of their common surface.

In Advisor 7.5 we improve this feature and we also display the size of common widow area, to enable the users to easily take a decision for the right planes location.

