



STRATEGIST™

LASER SAWING PLANNING SYSTEM.

SOFTWARE INSTALLATION GUIDE

by Sarin Technologies Ltd.

DOCUMENT VERSION 1.00

Limited Warranty and Disclaimer

Sarin Technologies warrants this product to be free from defects in materials and workmanship under normal use for one year from purchase. All implied warranties and conditions (including any implied warranty of merchantability or fitness for a particular purpose) are disclaimed as to the product and this manual. Your exclusive remedy for breach of warranty will be the repair or replacement of this product or a refund of the purchase price at our discretion. In no event will Sarin Technologies Ltd. or its directors, officers, employees, or affiliates be liable to you for any consequential, incidental or indirect damages (including damages for loss of business, profits, business interruption, and the like), whether foreseeable or unforeseeable, arising out of the use or inability to use the product of this manual, regardless of the basis of the claim and even if Sarin Technologies Ltd. representative has been advised of the possibility of such damages.

Sarin Technologies Ltd. liability to you for actual damages for any cause whatsoever, and regardless of the form of the action, will be limited to the money paid for the product that caused the damages.

©Sarin Technologies Ltd. 2000-2010. All rights reserved.

This document and the information contained herein belong to Sarin Ltd. ("Sarin") and may be used only as authorized by Sarin in writing. No part of this publication may be reproduced in any way without the prior written consent of Sarin.

This document is subject to change without notice.

The **Sarin®** and **STRATEGIST®** names are registered trademarks of Sarin Ltd. Other brand and product names referred to herein are the trademarks of their respective owners.

Sarin Technologies Ltd.

First Printed 2010

Document Version 1.00

NOVEMBER 2010

Contents

INTRODUCTION 1
 HOW TO CONTACT US..... 1
INSTALLING THE SOFTWARE 2

This document describes how to install your Strategist software.

How to Contact Us

Please contact your local Sarin representative with any questions or comments you may have regarding the site preparation procedure.

Headquarters:

Sarin Technologies Ltd.
7 Atir Yeda Street
Kfar Saba 44425
ISRAEL

General Information:

www.sarin.com
TEL: +972-97-903500
FAX: +972-97-903501

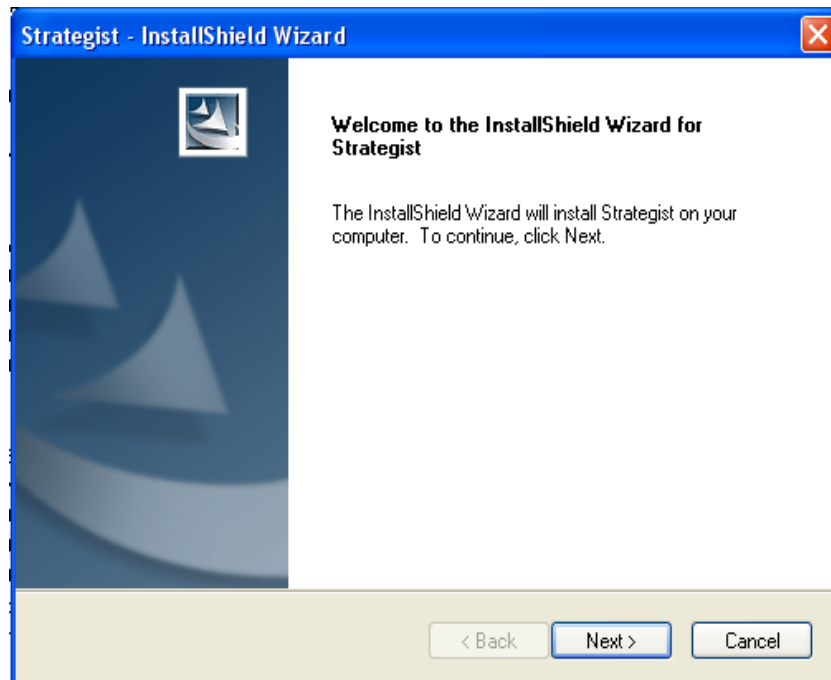
Sarin Support:

Email: support@sarin.com

TEL: +972-97-903500 extension 111

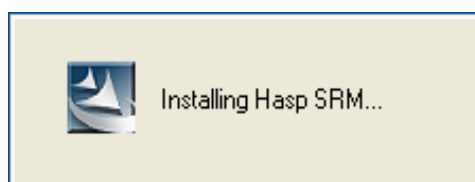
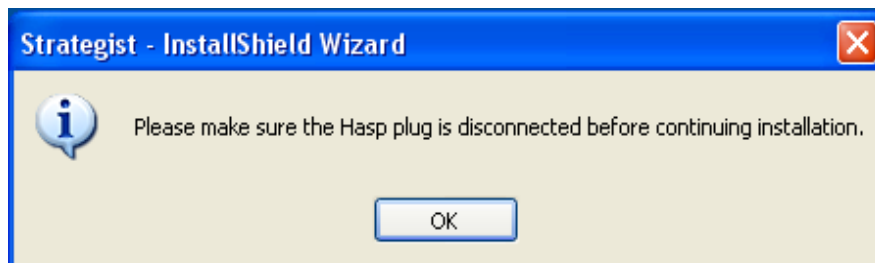
INSTALLING THE SOFTWARE

1. On the installation CD double-click the **Setup.exe** file in the root directory.



The **Setup** window opens.

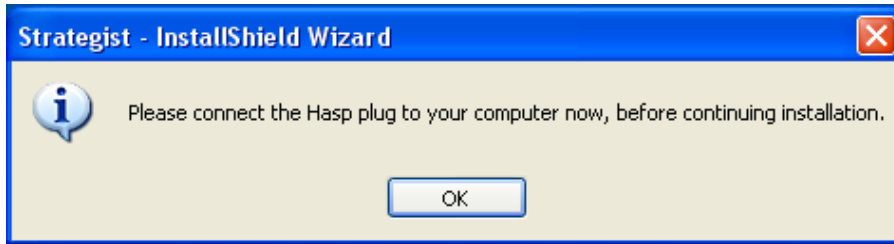
2. Disconnected the Hasp plug and press Ok to continue.



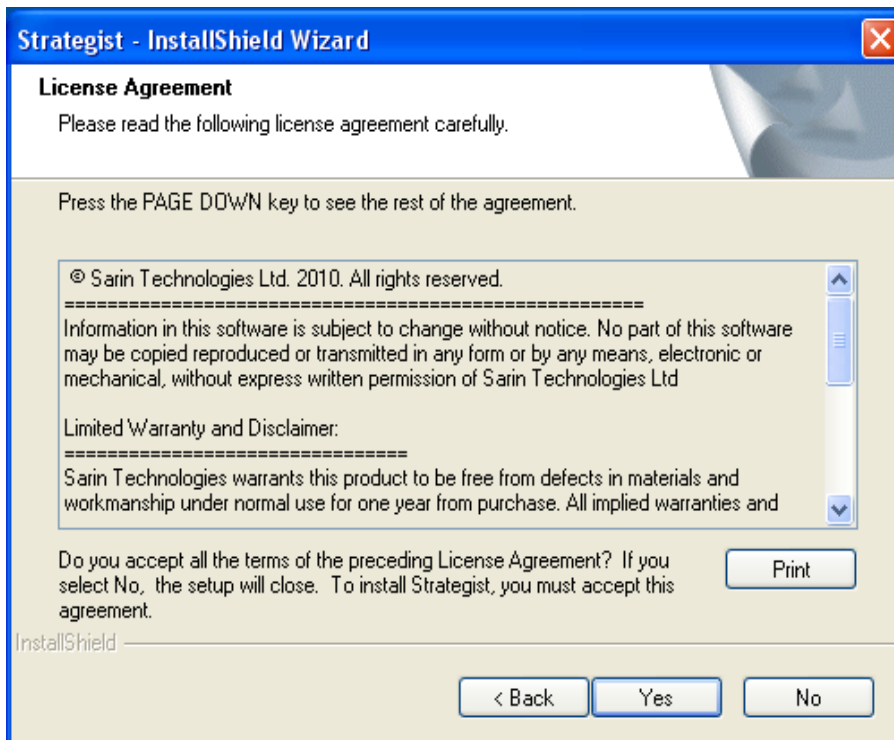
Installing Hasp message will appear on screen

2. Connect the Hasp plug, wait for 20 seconds and then

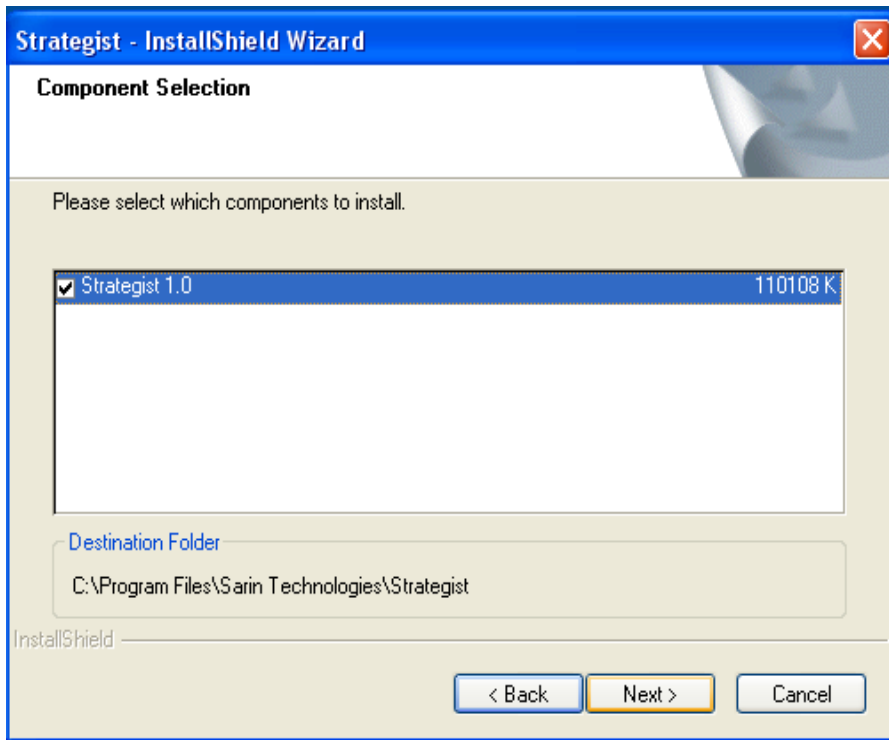
Press to continue

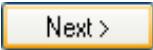


A license agreement window will appear on screen.

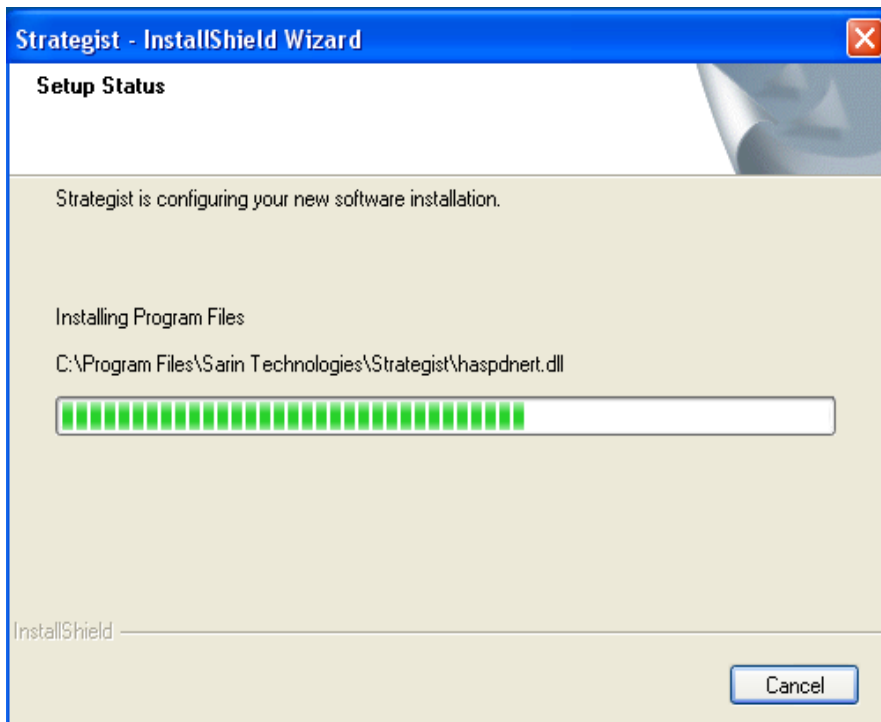


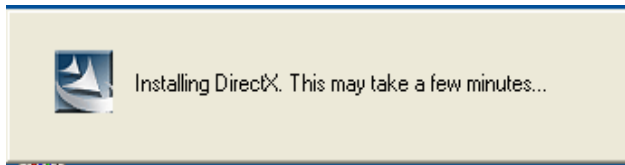
3. If you accept the terms, click the button.



5. Press  to continue.

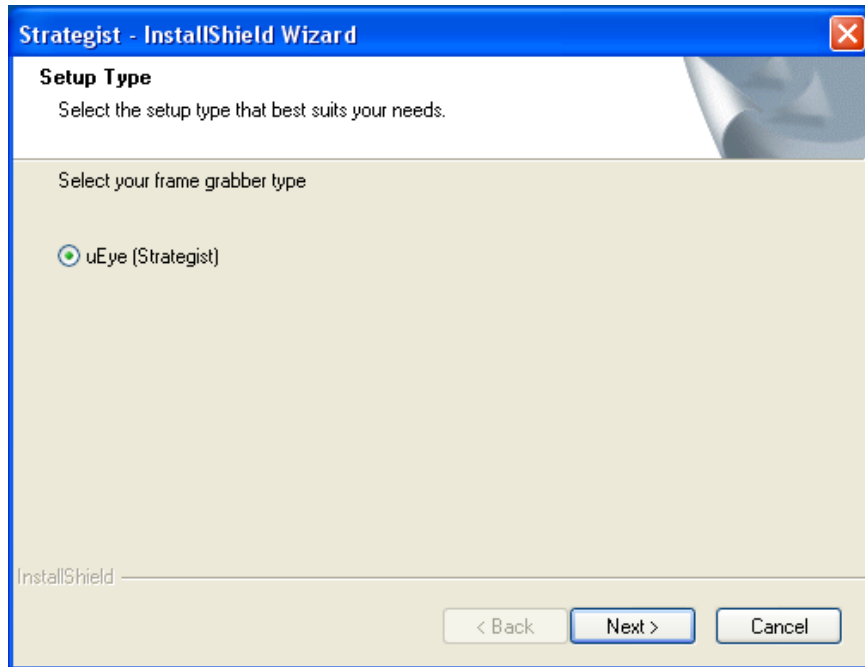
The installation process will begin.



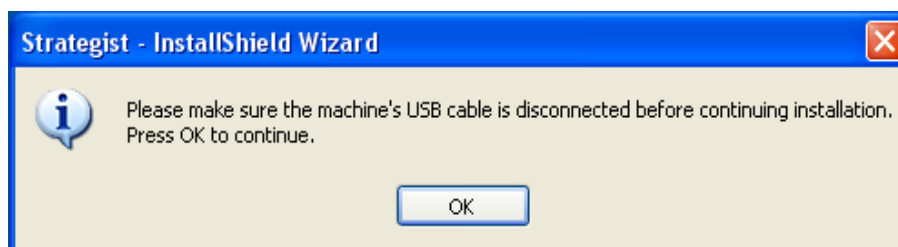


DirectX will be installed if necessary.

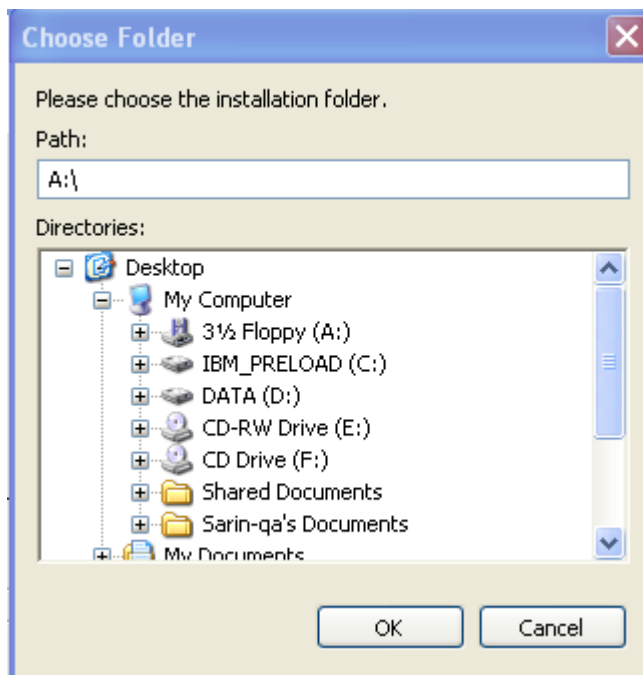
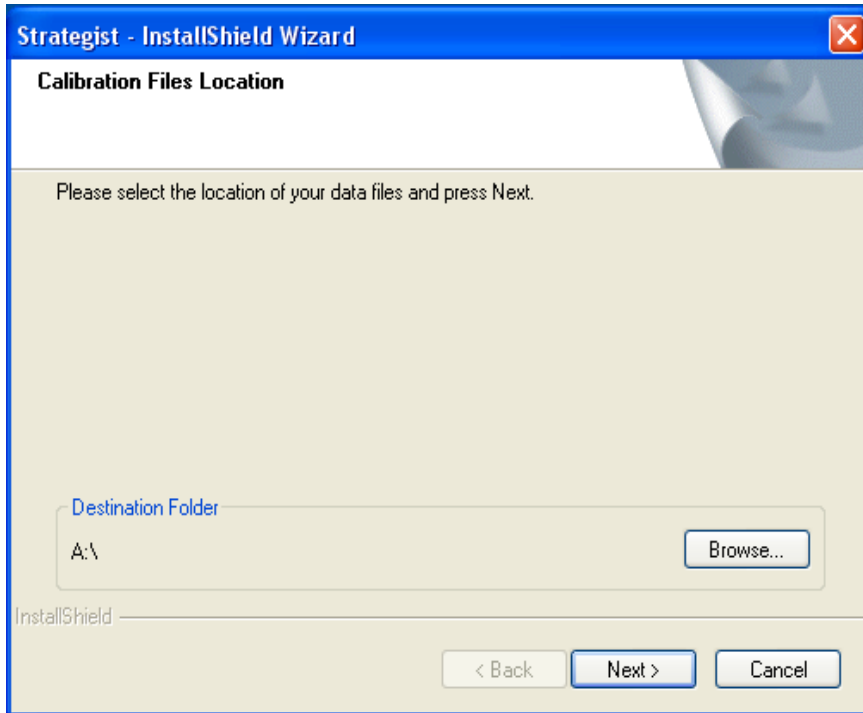
- Press to continue.



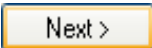
- Disconnect the USB cable between the Strategist and the PC.
And press to continue.

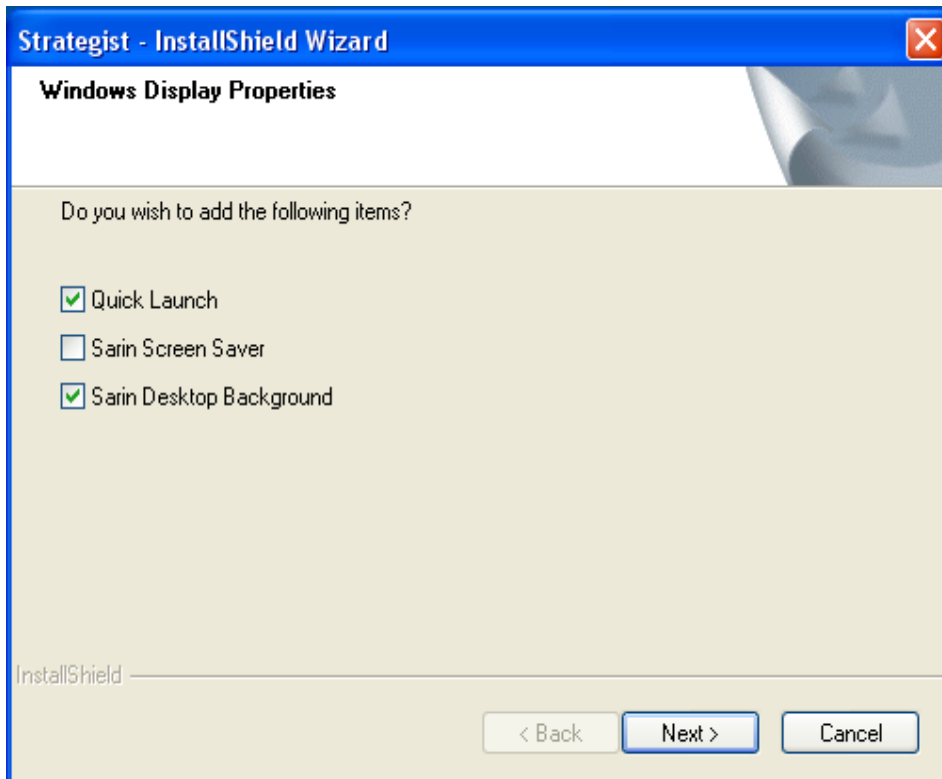


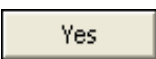
- Press and find the location of the calibration data files folder.

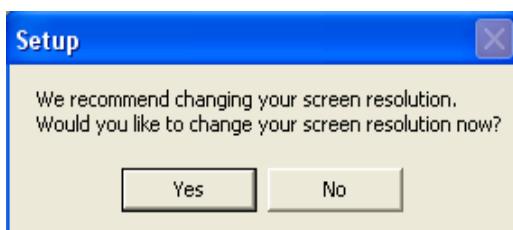



Click the button and then to continue.

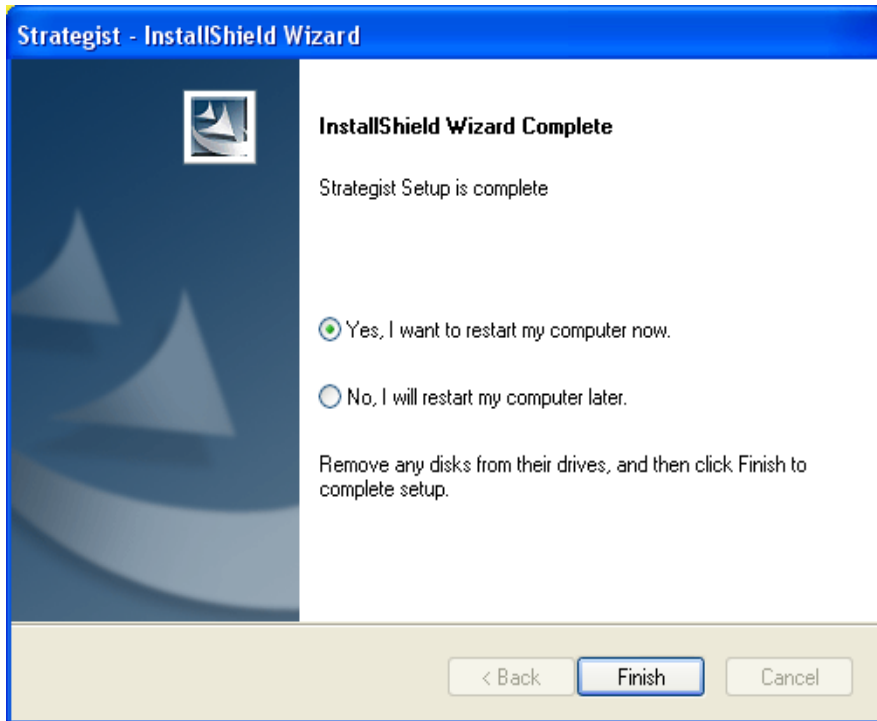
9. Press  to continue.



10. Press  to change the screen resolution.

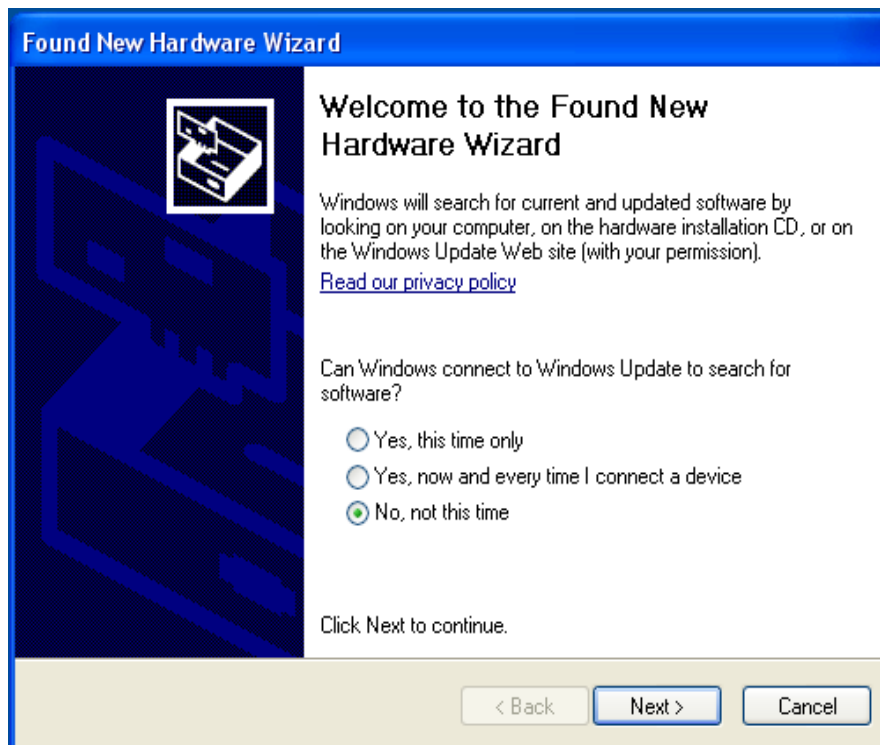



11. Press  .




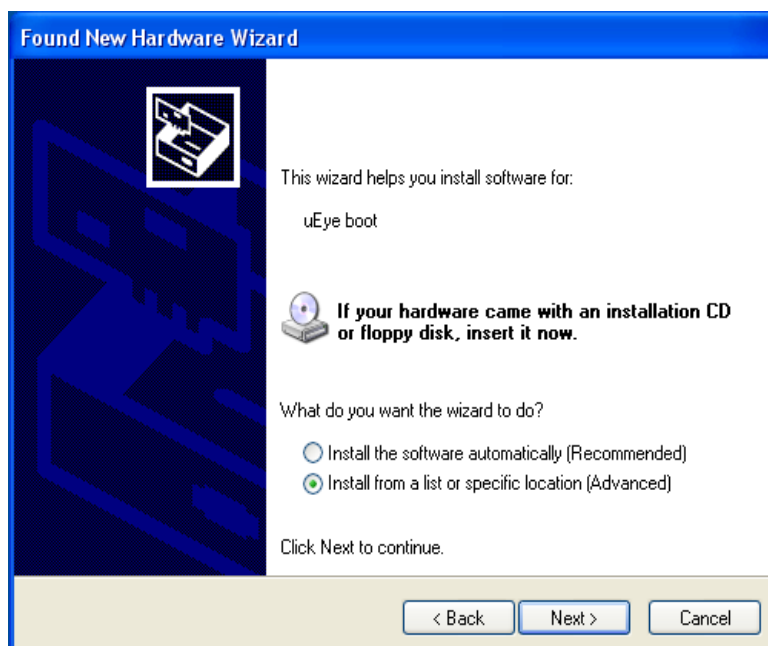
The computer will restart.

12. Reconnect the USB cable between the Strategist and PC.
After restart a new hardware wizard will appear on screen

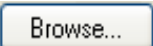


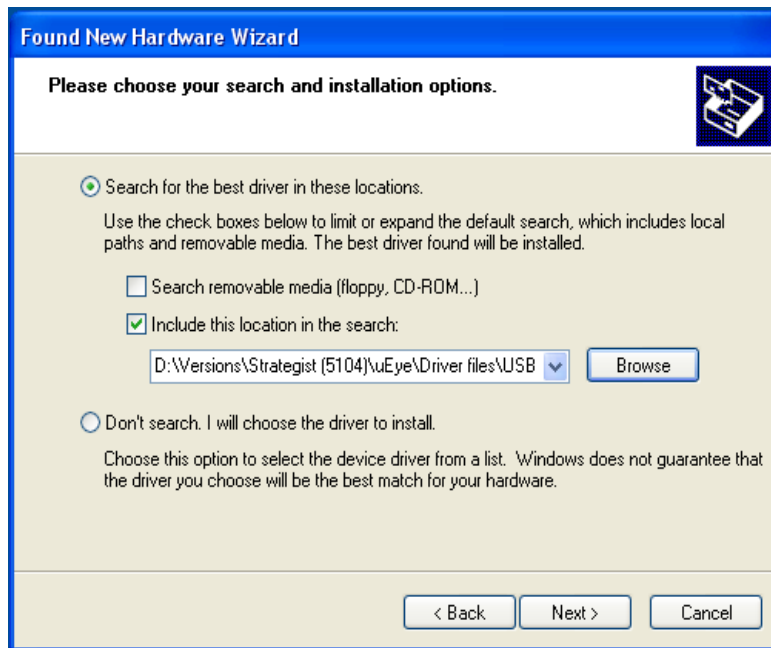
13. Choose the "No, not this time" option and press .

14. Choose the "install from a list or specific location option (Advanced)" option and press .



15. Choose the search option according to the picture below.

Press the  button and find the uEye driver files under \uEye\Driver files\USB folder in your installation disk.

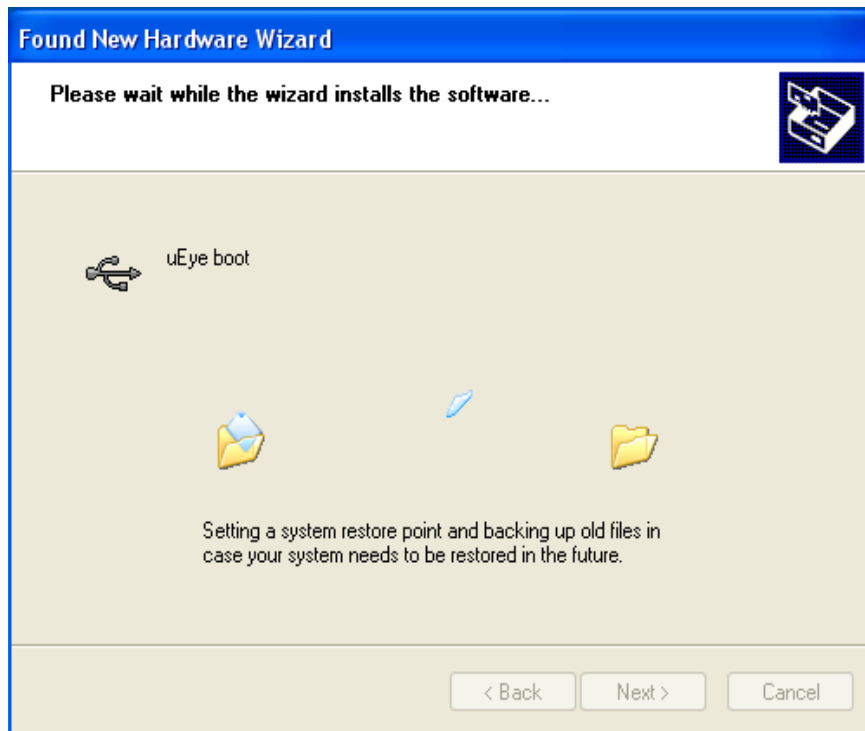


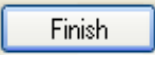
Press  to continue.

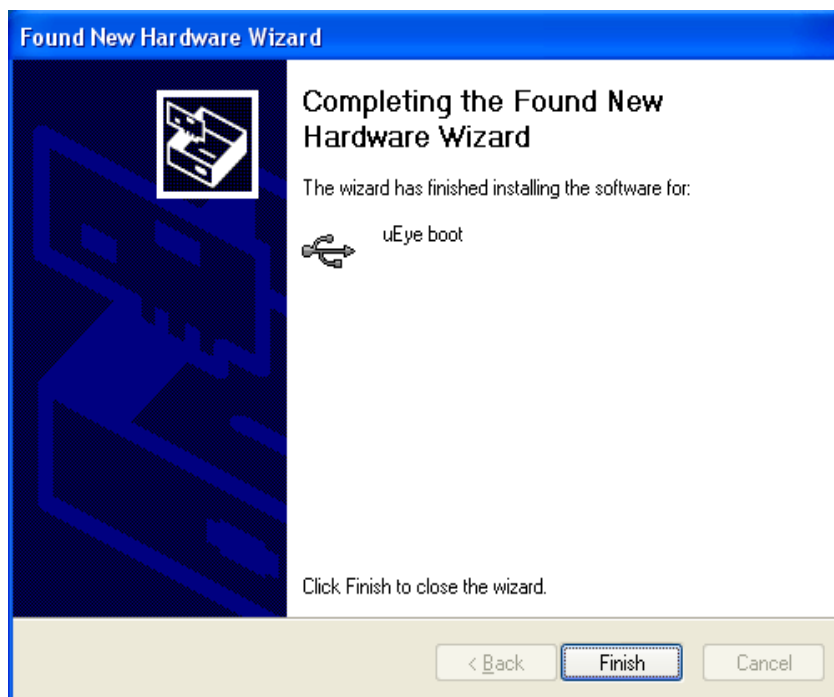
16. Press .



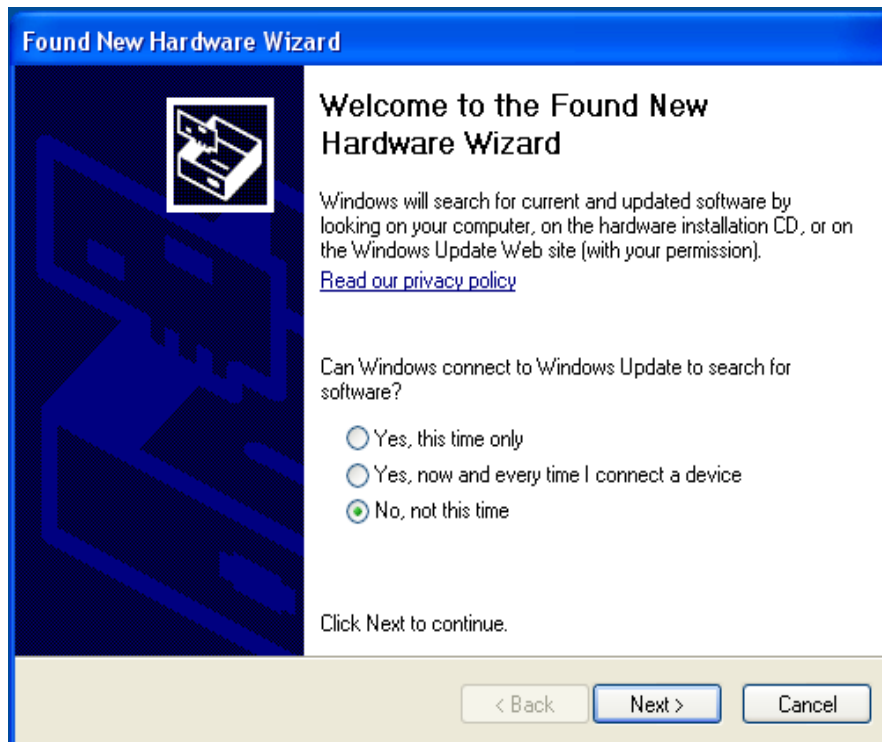
The drivers installation will begin...



17. Press  .



an additional new hardware will appear on screen.



18. Repeat step 13

