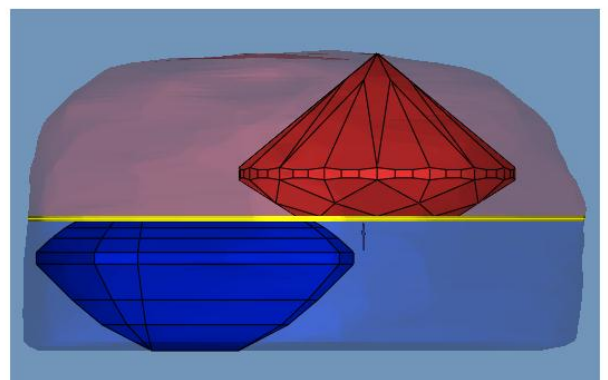
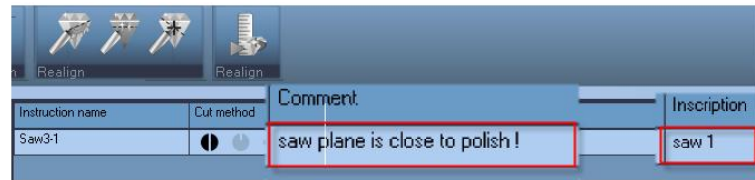
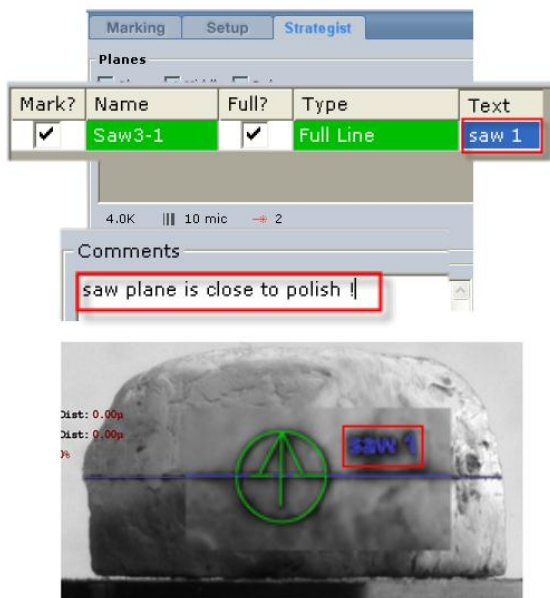


Quazer™ 4.2/Strategist™ 2.2 Release Notes

New Features / Modification:

Advisor™ 5.0 support –Strategist™ 2.2 offers full compatibility with the new Advisor™ 5.0 while benefiting from Advisor's new features such as saw plane name marking (inscription) and saw plane commenting thus improving the communication between the planners and the laser sawing operators !



Advisor™ 5.0 Strategist™ marking tab (on the left) and Strategist™ modeling screen (on the right)

Using the new finalize result feature in the Advisor™ 5.0 prevents user operating mistakes under the planning software thus preventing loading errors in Strategist™.



	0.163ct	0.711ct	<input type="checkbox"/>
	Saw1-1	AGL Excellent	
	0.140ct	1.203ct	<input type="checkbox"/>
	Saw1-1	AGL Excellent	
	0.259ct	0.711ct	<input checked="" type="checkbox"/>
	Saw1-1	Fancy Pear1	
	0.218ct	1.203ct	<input checked="" type="checkbox"/>
	Saw1-1	Fancy Oval1	

Advisor™ 5.0 finalize result

Note: Strategist™ 2.2 do not support Pie Groups with more than 2 planes.

New cassette creation tab – The process flow was simplified! Some of the functions that were under the cassette management tab were separated to a new tab called cassette creation. Separating the functions insures proper and easy pipeline work flow - starting with cassette creation as the first step and ending with cassette management as a final step.



Resolved Issues:

1. **Realign improvements** - several realign improvements performed in the code to achieve better accuracy in the transfer of stones from Strategist™ to the Quazer™.
2. **Exceptions** – exceptions that occurred in some user flows in the Quazer™ that required exiting the Quazer™ application and restarting it were solved.
3. **Verification tab disabled** – cases where the Quazer™ verification tab getting disabled in some user flow were solved.
4. **Start/Resume Job** – specific cases in which the user was unable to resume the job process were fixed.