

## DiaScribe™ 2.1 Technical Notes

### Top 4 Lists:

1. Laser Marking calibration in XCaliber – Page 10
2. New Laser Marking Type - Teem Laser – Page 10
3. Application & User settings are saved in files under a new location, instead of OS registry - Page 3
4. System Data can be upgraded from previous (DiaScribe 1.x) versions! Including marking calibration data – See Fast installation instructions – Section 6 – Page 1

### Installation

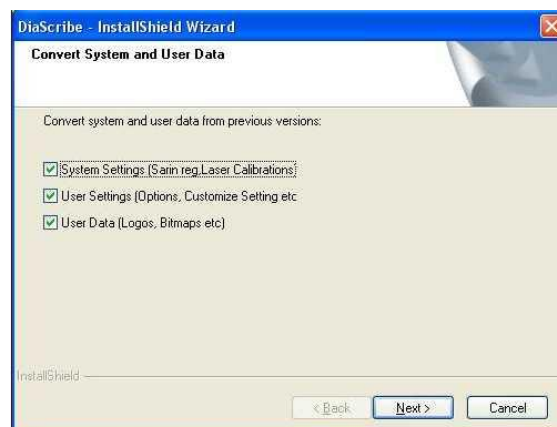
#### Fast installation instructions:

1. Make sure all “Found New Hardware” dialogs are closed.
2. In case of upgrade:
  - a. Go to C:\Program Files\Sarin Technologies\DiaScribe.
  - b. Make backup for DiaScribe folder and rename it (i.e. DiaScribe 1.x).
3. Insert DiaScribe 2.1 CD to the CD drive (installation will start automatically)
4. Direct the installation to the machine data folder (in case of clean install).
5. Direct the installation to the existing installation data folder when requested to insert the system data disk (upgrades only).

#### **Note!**

***System data (Calibrations) are converted during installation.  
Adding the data manually after installation will cause misshapes.  
If you fail to provide a data path during installation,  
Re-install the application once you inquire the data diskette / files.***

6. Define whether or not to import the user settings (registry values) and user files (Logos, Bitmaps, Options etc..) from existing installations (upgrades only):



7. Finish the installation
8. Open and close XCaliber.

❖ ***Warnings: Don't backup versions, copy builds, or configuration files manually without using "Folder Rename" application. Refer to DiaScribe 2.1 version.***

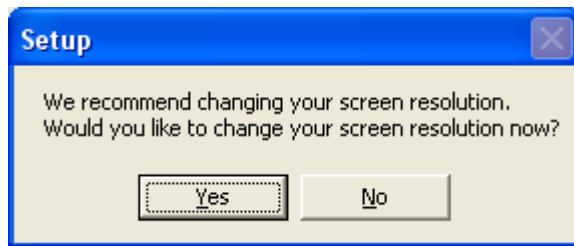


- ❖ Note - The following calibrations should be applied after installation if you do not direct the installation to existing data folder or data disk:
  - Laser Marking
  - Light Calibration

### Screen Resolution

DiaScribe 2.1 supports also screen resolution of 1280\*1024.

During the installation you'll be asked to confirm automatic change of your screen resolution to the new settings. Notice it can change desktop icons positioning.



### DiaScribe 2.1 vs. Previous DiaScribe versions

DiaScribe 2.1 installs itself on the same location (folder) as previous DiaScribe versions. In addition, it holds an autonomic set of properties and system files allowing it to coexist with old versions simultaneously.

As oppose to DiaScribe 1.x and below which used to be indicated as "DiaScribe" in the Add or Remove Programs, DiaScribe 2.1 and above will be indicated as "Sarin Technologies DiaScribe".



It is recommended to install DiaScribe 1.x before DiaScribe 2.1 in case of use of the two applications parallel on a clean / formatted computer.



## Files

In order to support Win7 OS security conventions, DiaScribe files have moved from: C:\Program Files\Sarin Technologies\DiaScribe to two separate locations:

1. All exe files and DLLs to: C:\Program Files\Sarin Technologies\DiaScribe
2. All the rest (data files) to:
  - a. XP computers: C:\Documents and Settings\All Users\Application Data\Sarin Technologies\DiaScribe
  - b. Win7 computers : C:\Program Data\Sarin Technologies\DiaScribe

The installation will create a desktop shortcut to these folders.

- ❖ **Note – Application Data folder is a hidden OS folder. In order to reach it, you will first have to change the “Show hidden files and folders” parameter to true through the tools→Folder Options→View tab, accessible from any windows folder (windows explorer).**

## Application settings

DiaScribe Registry has moved to three separate CNFG files.

Machine, application, & user setting files are now encrypted and can only be accessed by ConfigDataEditor (using the combo box, manually browsing or double-click on the .CFNG file):

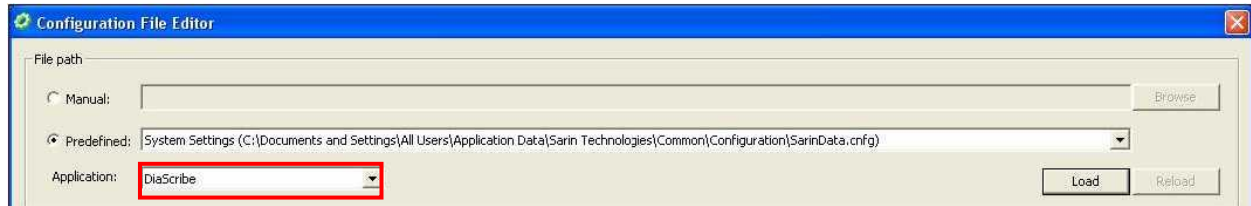
1. **Current User->Sarin Technologies->DiaScribe** has moved to:
  - a. XP computers: C:\Documents and Settings\\Application Data\Sarin Technologies\DiaScribe\Configuration\AppData.cnfg
  - b. Win7 computers: C:\Users\\AppData\Roaming\Sarin Technologies\DiaScribe\Configuration\AppData.cnfg
2. **Local Machine->Sarin Technologies->DiaScribe** has moved to:
  - a. XP computers: C:\Documents and Settings\All Users\Application Data\Sarin Technologies\DiaScribe\Configuration\AppData.cnfg
  - b. Win7 computers: C:\ProgramData\Sarin Technologies\DiaScribe\Configuration\AppData.cnfg
3. **Local Machine->Sarin** has moved to:
  - a. XP computers: C:\Documents and Settings\All Users\Application Data\Sarin Technologies\Common\Configuration\SarinData.cnfg
  - b. Win7 computers: C:\ProgramData\Sarin Technologies\Common\Configuration\SarinData.cnfg

- ❖ **Note: some computers might have different prefixes than the common mentioned above, such as All Users.WINDOWS instead of All Users.**

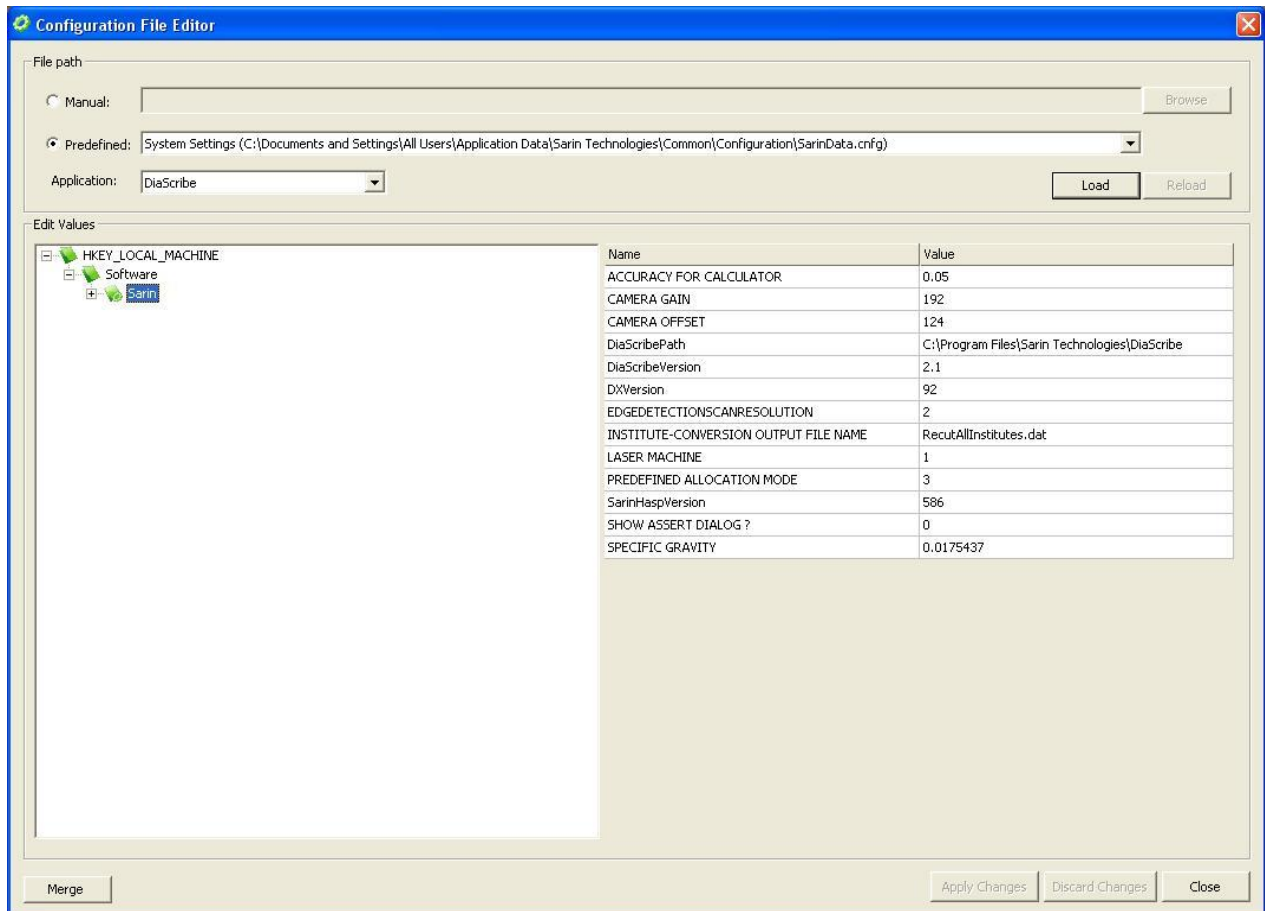
## CNFG Tools

DiaScribe 2.1 includes CNFG tool – the only way to manual configuration and importing of CNFG settings. The tool is located under the “C:\Program Files\Sarin Technologies\DiaScribe\Extra Files\XML Tools”. The new tools replace existing registry editing tools like Regedit.

### CNFG Tools - Configuration Data Editor (RegEdit)



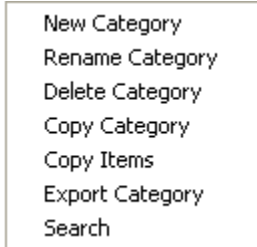
Since other Sarin applications have moved their settings to be located under the CNFG files system, you are now requested to select the relevant application from the combo box (DiaScribe) before loading the relevant CNFG file. In order to view / edit the System Settings CNFG file (previously known as Local Machine -> Sarin in the registry), it doesn't matter what application you select since the CNFG is common to all installed Sarin applications.



#### **ConfigDataEditor**

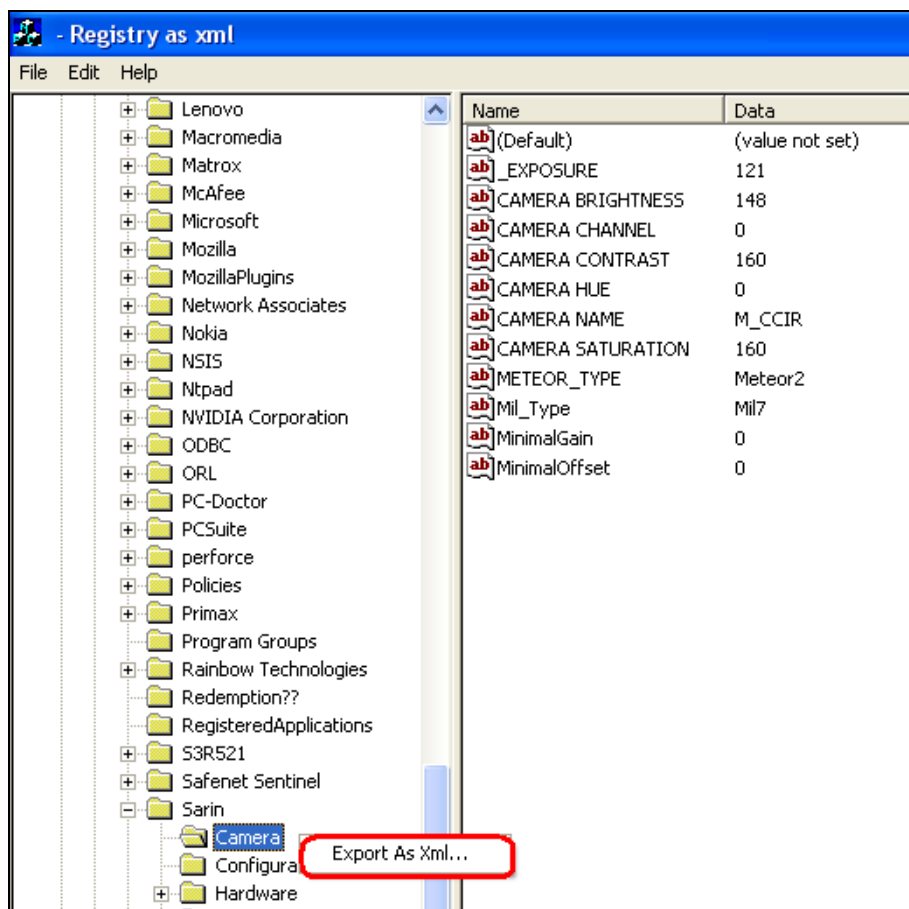
- **ConfigDataEditor.exe:** Replaces the Regedit and merging .cnfg files (new file or old .reg files which were converted to XML with RegFileConverter and were placed under data folder during installation process):

1. Make sure DiaScribe is not running (exit the application)
2. Select the relevant settings from the combo box (User, system or application settings).
3. Click the "Apply Changes" button to apply or the "Discard Changes" to cancel the changes and load the CNFG content again.
4. Use mouse right click over a category (folder) to perform the additional tasks:



5. Click the Merge button and select .cnfg file in order merge a .cnfg file (new file or exported) to the opened Sarin CNFG file (merge a partial CNFG tree into the full application setting tree. For example, after upgrading the motors, you would like to merge the relevant motor settings into the existing tree. The installation CD contains packages of different configurations that could be merged to the existing tree like `\Utils\XMLSets\Motor16KHighRes.cnfg`).
6. .cnfg file types will automatically opened by double-click with this ConfigDataEditor.

### Reg2XML



Reg2Xml



- **Reg2Xml.exe:** Allows you to create XML files out of registry branches. The XML files could be later on converted to CNFG files and merged to the existing application settings CNFG using the Configuration Data Editor. To export a branch to XML:
  - Run the Reg2Xml.exe
  - Select A branch
  - Right click and select “Export As XML”
  - Select a name and folder in which to save the converted XML files
  - Use the Configuration Data Editor to merge the exported XML to the application settings XML’s.

### **Multiple DiaScribe 2.x versions**

Since DiaScribe 2.x files & settings are located under 3 different locations, a new tool will help you backup DiaScribe 2.x versions in order to reserve them or use them parallel. The new tool is located under:

*Installation DVD\Extra Files\Folder Name Change\Folder Rename.exe or*

**C:\Program Files\Sarin Technologies\DiaScribe\Extra Files\Folder Name Change\Folder Rename.exe**

The new tool will add a new Desktop shortcut to the backed up application .exe file and copies the following folders:

4. User folder:
  - a. XP computers: **C:\Documents and Settings\\Application Data\Sarin Technologies\DiaScribe**
  - b. Win7 computers: **C:\Users\\AppData\Roaming\Sarin Technologies\DiaScribe**
5. Application folder:
  - a. XP computers: **C:\Documents and Settings\All Users\Application Data\Sarin Technologies\DiaScribe**
  - b. Win7 computers: **C:\ProgramData\Sarin Technologies\DiaScribe**
6. Program Files folder:
  - a. **C:\Program Files\Sarin Technologies\DiaScribe**

❖ **Note – The tool doesn’t back up the System folder (“Common”) since this folder serves all applications and versions installed on the same computer.**

**This tool should be operated by the user administrator of the computer who has the privileges to copy these folders.**

### **Install / Remove: few applications (different setting files) – common Hardware**

- Installing DiaScribe 2.1 parallel to previous Sarin applications which uses XML setting files (i.e. Instructor 1.0, DiaVision 5.0, Advisor 4.1) behaves like first Sarin installation (regarding Hardware questions, direct to Data, etc.).
- Under **Common** folder, in addition to SarinData.xml a new file named SarinData.cnfg will be created.
- During Remove, when asked to remove Hardware, select **No** in order to continue working with your previous Sarin applications which uses XML setting files.



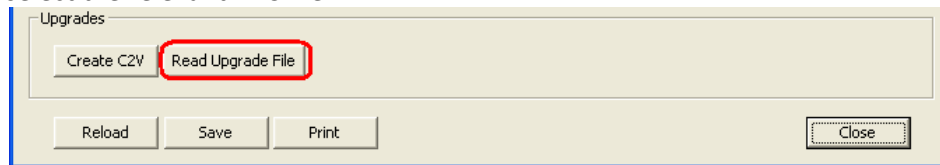
## Operating Systems – Win7

DiaScribe 2.1 fully supports Win7 O.S including all Hardware components. For this purpose the following drivers were changed and automatically installed when selected or added and installed when Win7 O.S is recognized by the installation:

- Sarin Machines (see detailed installation instructions in [Appendix A](#)):
  - Pico (DiaExpert) – Added. If needed it is located under:  
*Installation DVD\Picolo setupWin7.exe*
    - a. **Note – The new frame grabber name (METEOR\_TYPE entry in the common SarinData.cnfg) is “Picolo5” instead of “Picolo” when working on Win7 Computers**
  - Pico frame grabbers drivers have compatibles frame grabbers testers located under:  
*Installation DVD\Utils\Support\Framgrabber testers*
- External drivers:
  - USB to RS232 Cable - Changed. The same new driver is now used both for XP and Win7. If needed it is located under:  
*Installation DVD\Utils\USB2RS232CABLE\ST-LAB\PL2303.exe*
- Accounts:
  - Installation DiaScribe 2.1 on **Administrator account is a must** in order to work properly, otherwise you may encounter unexpected problems:
    - a. Calibration with Administrator account and measure/mark on the same computer with Standard account isn't possible.
    - b. Saving stones will fail.
    - c. Folder Rename backup will malfunction.

### Hasp:

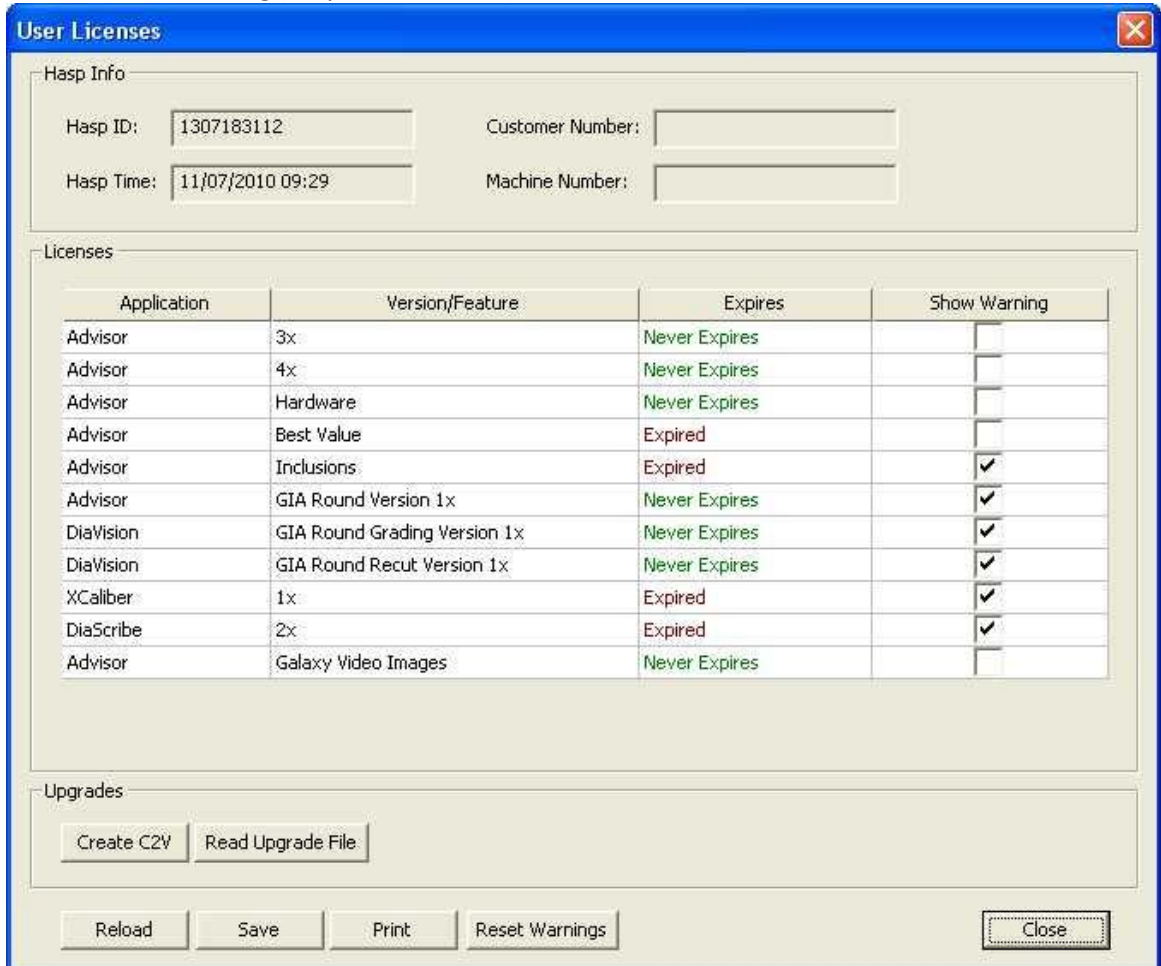
- DiaScribe 2.1 installation requires new hasp plug (red), with new hasp feature / products (DiaScribe 2.x), and includes new Hasp drivers.
- In case of a failure of HASP recognition, use the new driver or ClickI5.exe, located under:  
*Install Disk\HASP\SRMHASP*
- DiaScribe 2.1 includes new Hasp features:
  - DiaScribe Version 2.X
- A new feature allows you to run V2C files (small size upgrade files produce by Sarin) in order to format or upgrade the customer's HAPS. Click on the "Read Upgrade File" in the Hasp Show dialog (Help→Show Hasp) and select the relevant V2C file.



- Hasp plug is required for installation, upgrade, and remove (uninstall – unless you would like to remove application without hardware - **not recommended**). **In case of remove application without hasp plugged, and before installing new configuration, it is required to manually clean program files application folder, program data (user files) application folder, common folder, and all Hardware drivers.**



- DiaScribe 2.1 includes new HASP show feature: HASP expiry warning messages:
  - This feature enables getting a warning before HASP feature is expired – time limited and executions limited, and gives you enough time to initiate the upgrade and renewal process
  - The HASP Show dialog (Help→Show HASP) is now :



Whenever application is launched, there is a checking if there is any feature one or more that is about to expire:

For time limited features check if feature is about to expire in 30 days.

For executions limited features check if feature is about to expired in 50 executions.

If that check result is that expiration is about to occurred, the user gets a warning indicates feature(s) is about to expired

In the new “**Show Warning**” column, the user will be able to set whether or not to get expiration warning for specific feature. The default value is TRUE, for existing features and once upgrading or renewing (using the “Read Upgrade File”)

Each feature that is about to expire, time or executions (reached the “50 days before” or “M executions left”) should be highlighted in **RED** text.

Using thee “Reset Warnings” button will change features’ “Show Warning” checkbox flags to TRUE.

On Exit this dialog, all “Show Warning” setting is being saved.



## Calibration

### XCaliber

DiaScribe 2.1 is the first version to support XCaliber Laser Marking calibrations. The Calibration guild is located under:

Install Disk\Documents\Calibration\XCaliber - Motor Type, Laser Marking & Micron Per Pulse Calibration Procedure.doc

**The above means Laser Calibration is not supported anymore!**

## Laser Marking

### Teem Laser

DiaScribe has a new Laser Marking type - Teem Laser, which connect to the PC via RS232 connection.

**This connection required for communication with the Laser in order to change Laser level and for the initialization of DiaScribe application.**

New file named **Teem.xml** should be found in each Machine Data. This file contains the Laser S/N and the Laser levels (peculiar for each laser) customize by Sarin technician.

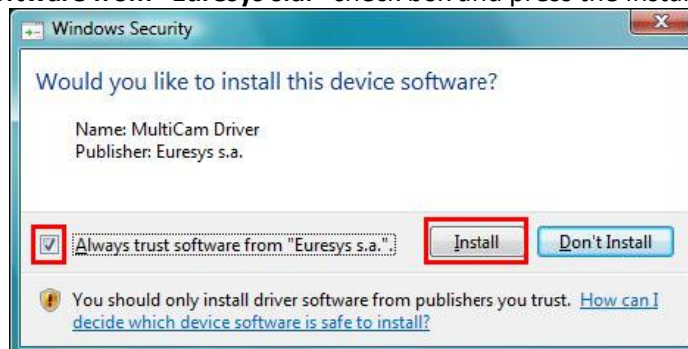
## Appendix A - Frame grabbers Installations on Win7 OS

### Picolo

1. Select Picolo Frame grabber during installation.
2. Windows Security message will pop up During Picolo driver installation:



3. Mark **Always trust software from "Euresys s.a."** check box and press the install button:



4. When the installation is completed, restart your computer.
5. Picolo driver is successfully installed.